

Frequently Asked Questions, continued

If I only need a single niche, will someone else's remains ever be placed in my niche?

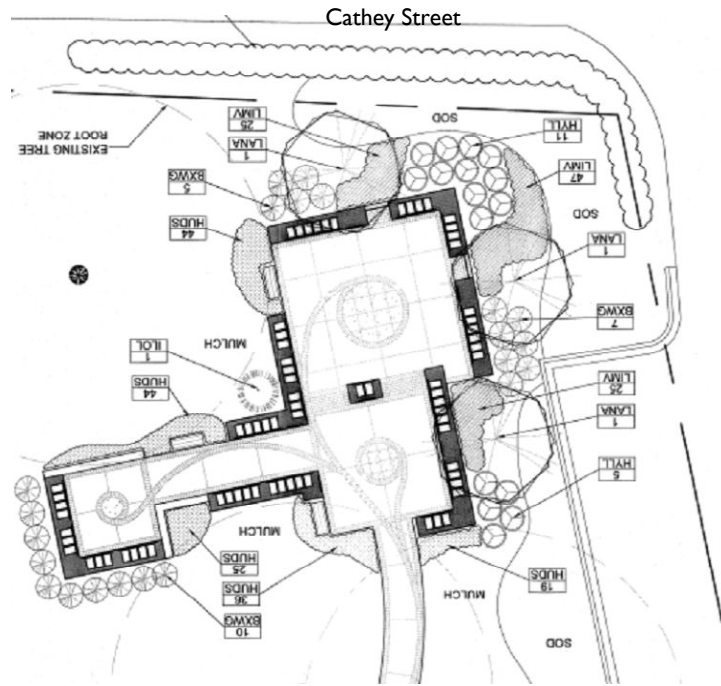
DUMC reserves the right to sell the remaining portion of the double niche to another person desiring a single niche.

What happens if I purchase a niche and decide later not to use it?

DUMC will refund the amount paid, less \$500, for a niche that is no longer needed/wanted.

What if I have already made other burial arrangements?

Should you prefer inurnment at the DUMC Columbarium instead, you should contact the facility with which you made arrangements to learn how those arrangements can be terminated.



DAVIDSON UNITED METHODIST CHURCH

Columbarium

AT THE PRAYER GARDEN

- AN OPTION FOR CHRISTIAN BURIAL ●
AT YOUR CHURCH HOME



Conceptual Rendering by Columbarium Planners, Inc.

DAVIDSON
UNITED
METHODIST
CHURCH

P.O. BOX 718 | 233 SOUTH MAIN STREET
DAVIDSON, NC 28036
704-892-8277 | WWW.DAVIDSONUMC.ORG

A columbarium is...

A collection of niches designed to house urns containing cremated human remains (cremains). Inscribed with the person's name and dates of birth and death, columbaria are constructed to serve as permanent structures in churchyards or within churches themselves.

Davidson United Methodist Church's Columbarium, located **behind DUMC's Congregational Care House, 262 South Street**, has been designed to complement our church building and grounds.

Benefits of a columbarium

- **Spiritual Site for Final Resting**
A columbarium affords church members and their families the opportunity to select their final resting place in the shadow of the church which has been central to their lives, a sacred site of beauty and dignity, where their loved ones can visit.
- **Simplicity of Planning**
The purchase of a columbarium niche eliminates the pressures of choosing a burial site, casket, vault, and monument. Additionally, there is no need to plan for inurnment and memorial services.
- **Substantial Financial Savings**
With the columbarium, costs are limited to cremation, the niche, engraving, and perpetual care.

Frequently Asked Questions

Who may use the Columbarium?

Inurnment in the Columbarium is ordinarily limited to present or past members of Davidson United Methodist Church and members of their immediate families, including spouses, parents, grandparents, children, and grandchildren. Requests for inurnment of others may be honored, following special approval by the Columbarium Committee.

How many niches are in the Columbarium?

It has **219 niches**, each with the capacity to hold 2 urns. As demand dictates, additional niches *may* be added in the future.

How is the Columbarium being paid for?

The columbarium is being ENTIRELY SELF-FUNDED through the sale of niches.

How much does a niche cost?

Each niche, holding up to 2 urns, costs **\$2,400**. This cost includes the niche, engraving, and perpetual care of the Columbarium. It does not include cremation, transportation, off-premises costs, or the purchase of an urn.

It is the responsibility of the subscriber to provide the urn/container (size requirements will be provided).

What will excess funds from sales of niches be used for?

It is expected that funds in excess of construction costs will be generated by sales of niches. These funds will be used for the operation of the columbarium and its landscaping and perpetual care. They will also be used for any future expansion of the columbarium.

How can I arrange to purchase a niche?

A Columbarium Packet may be obtained by calling the Church Office (704-892-8277). The packet contains an application, Columbarium Rules and Regulations. This information is also available on the DUMC website: www.davidsonumc.org under "Resources."

You will then submit your application with payment for approval by the Director of Facilities. Once approved, you will be contacted to finalize your niche selection. Upon final acceptance of the application, a certificate covering inurnment ownership rights will be sent to the purchaser.

May I select the niche that I want?

Niche assignments will be allocated on a first-come, first-served basis from available niches.